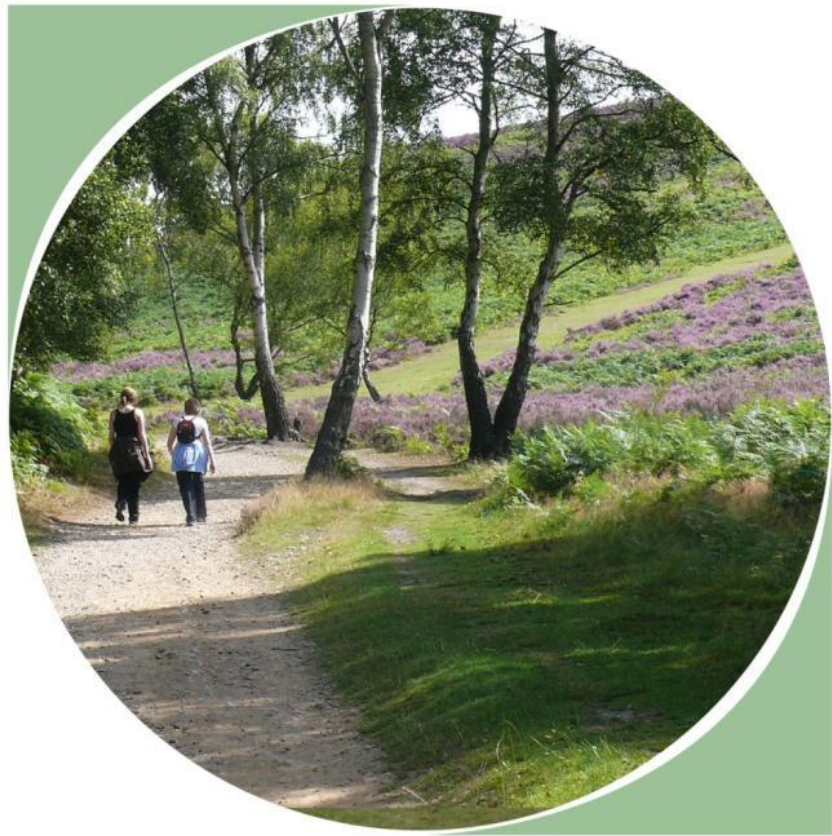




Cannock Chase Visitor Survey



Durwyn Liley

Date: 12th September 2012

Version: FINAL

Map Annex to accompany visitor report

Map 1: Visitor Survey Locations

Map 2: Car-parks surveyed

Map 3: Tally data, rates by activity

Map 4: Car-park counts

Map 5: Activities by location

Map 6: Home postcodes of interviewees: all data

Map 7: Home postcodes of interviewees: subset of Map 6

Map 8: Home postcodes of interviewees in relation to local authority subareas

Map 9: Home postcodes by survey point

Map 10: Home postcodes of walkers

Map 11: Home postcodes of cyclists

Map 12: Home postcodes of dog walkers

Map 13: Home postcodes of horse riders

Map 14 Home postcodes of people playing games

Map 15: Home postcodes of people who came running

Map 16: Home postcodes of mountain bikers

Map 17: Home postcodes of people who came orienteering

Map 18: Home postcodes of people who come to eat out

Map 19: Home postcodes of people who come to birdwatch

Map 20: Home postcodes by frequency of visit

Map 21: Convex hulls based on frequency of visit

Map 22: Convex hulls based on frequency of visit (subset of Map 21)

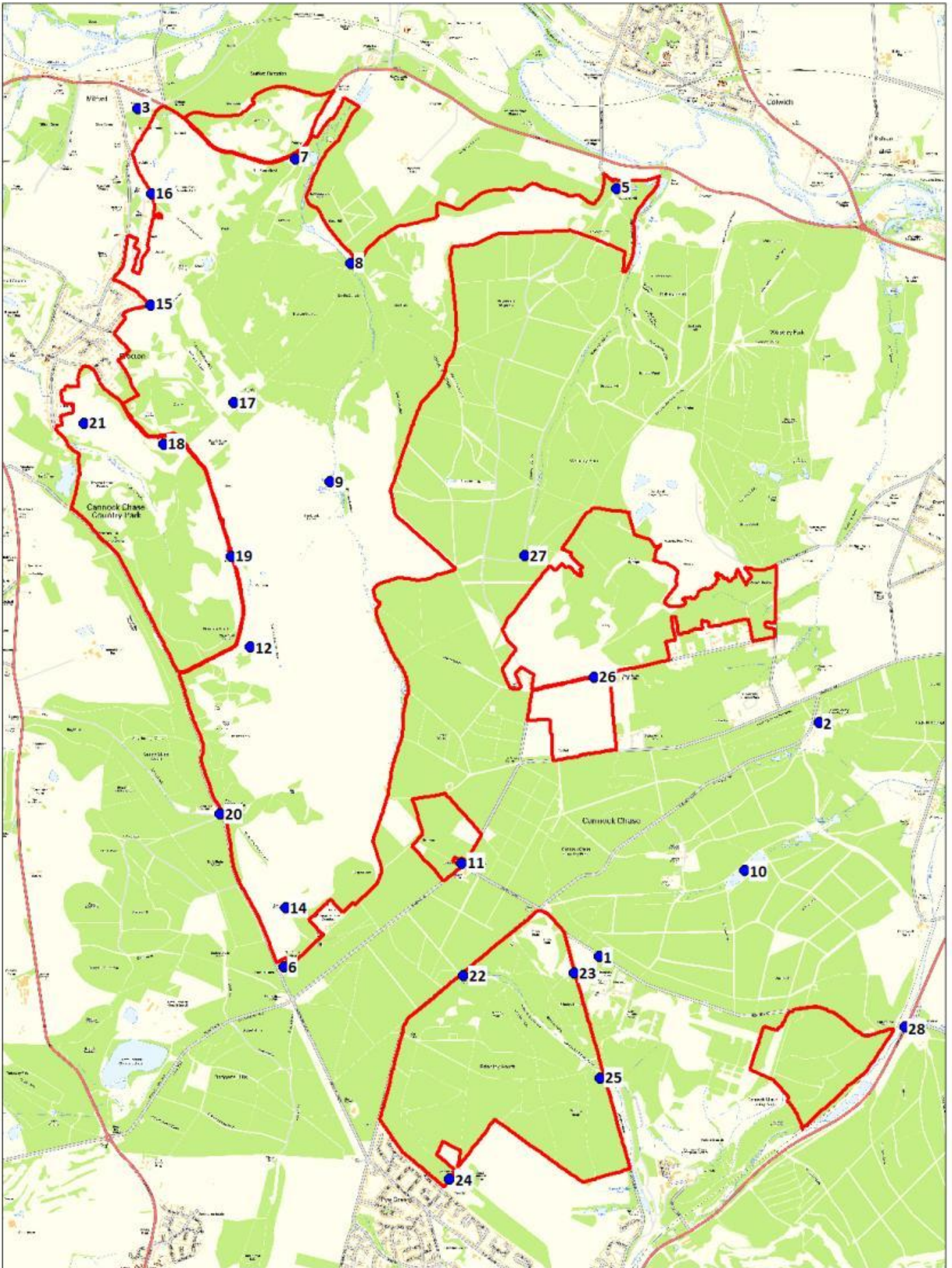
Map 23: Current numbers of housing by subarea and distance band

Map 24: Current housing and new housing by subarea and distance band

Map 25: Number of interviewee postcodes per 1km band and by subarea

Map 26: Total number of visitors by subarea and distance band

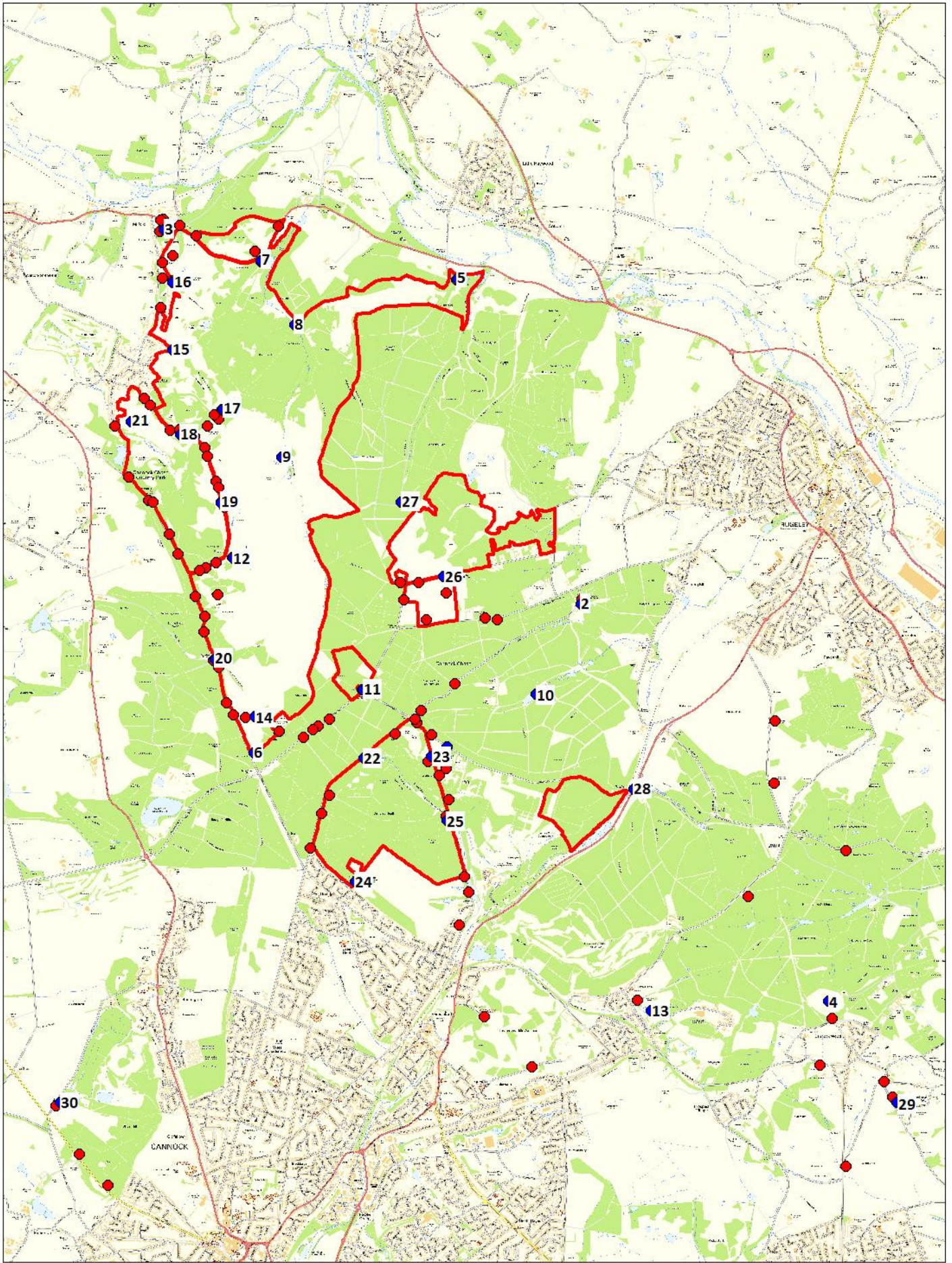
Map 27: Percentage change by subarea



Map 1: Visitor Survey Locations (Face-face interviews)

Contains Ordnance Survey Data.
©Crown copyright and database right 2011.

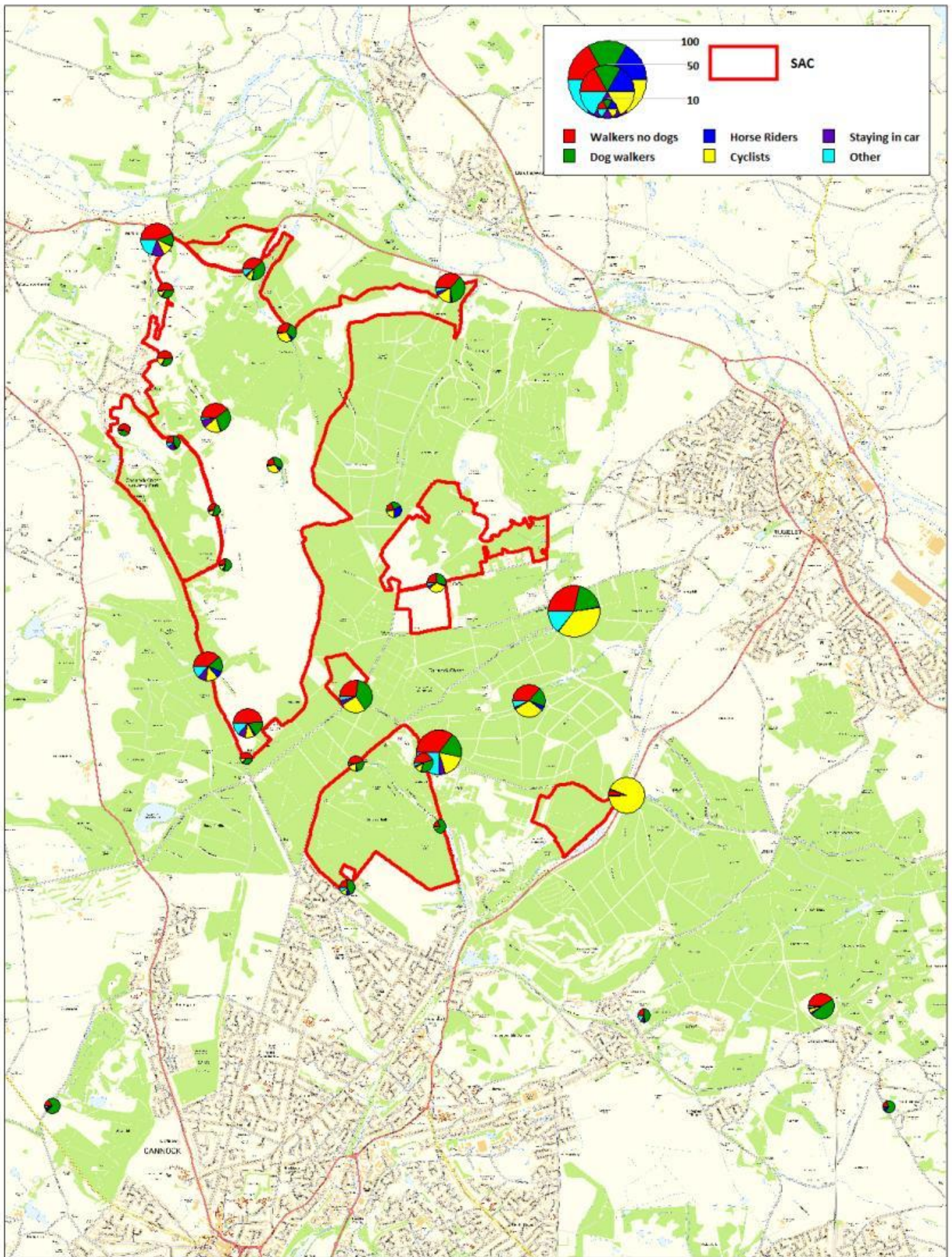




Map 2: Car parks surveyed

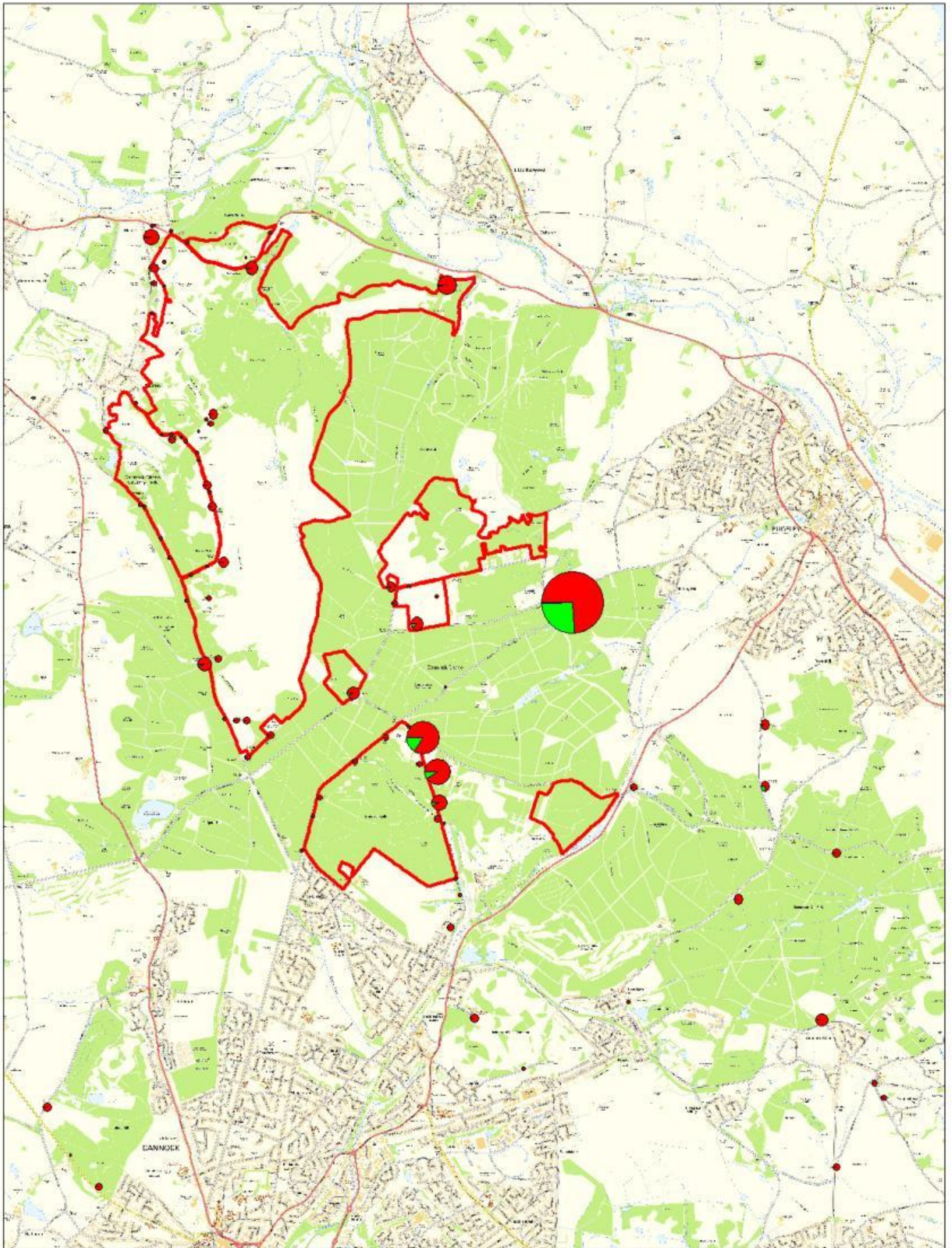
Contains Ordnance Survey Data.
©Crown copyright and database right 2011.

- Car parks covered on transects
- Locations for face-face surveys
- SAC



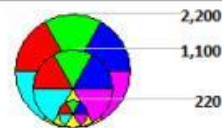
**Map 3: Tally Data, rates per activity
(People per hour)**

Contains Ordnance Survey Data.
©Crown copyright and database right 2011.



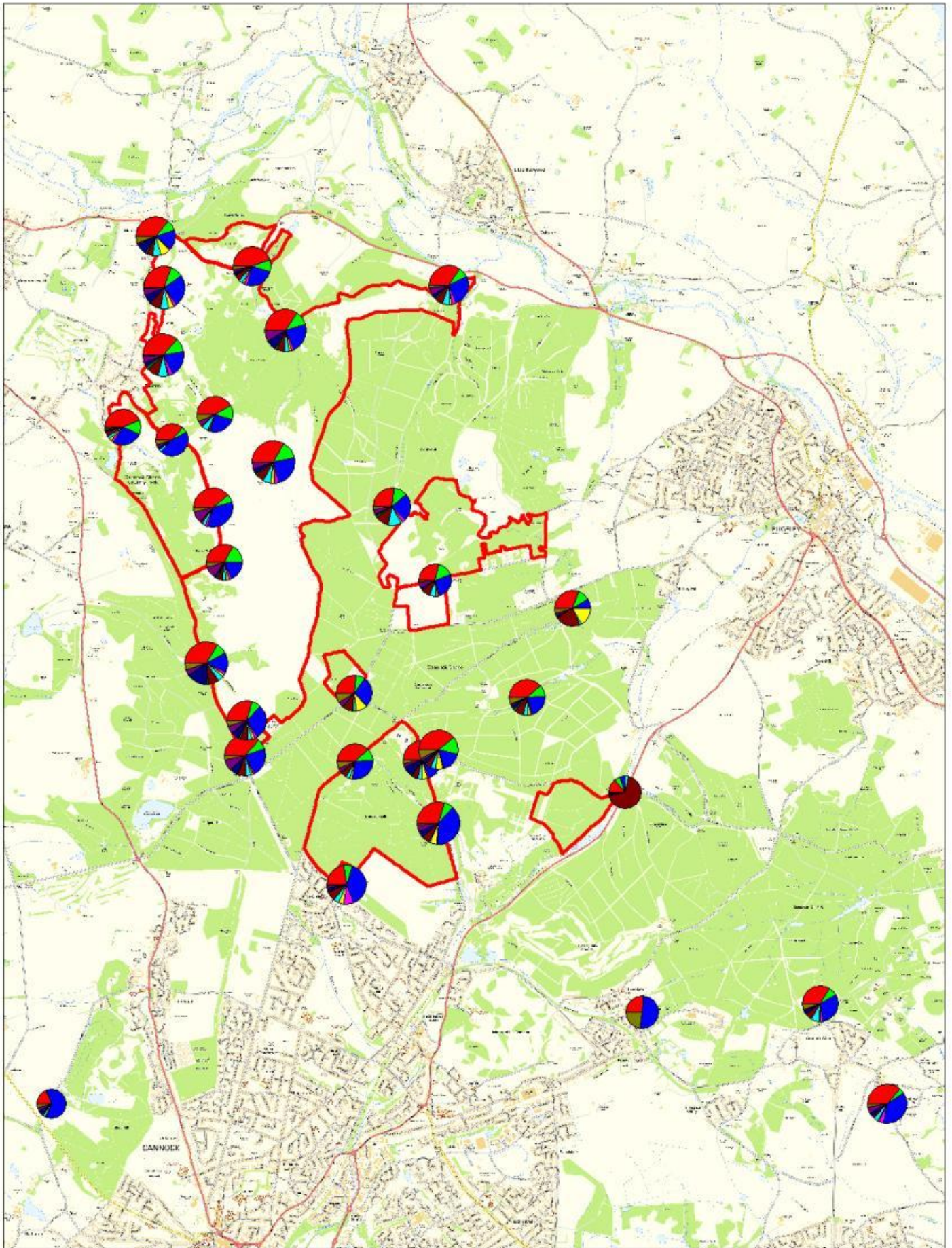
Map 4: Car-park counts, by vehicle type

Contains Ordnance Survey Data.
©Crown copyright and database right 2011.



- | | | |
|---|---|--|
|  Cars |  Coaches |  Horse box |
|  Cars with cycle racks |  Minibus |  Motor bike |

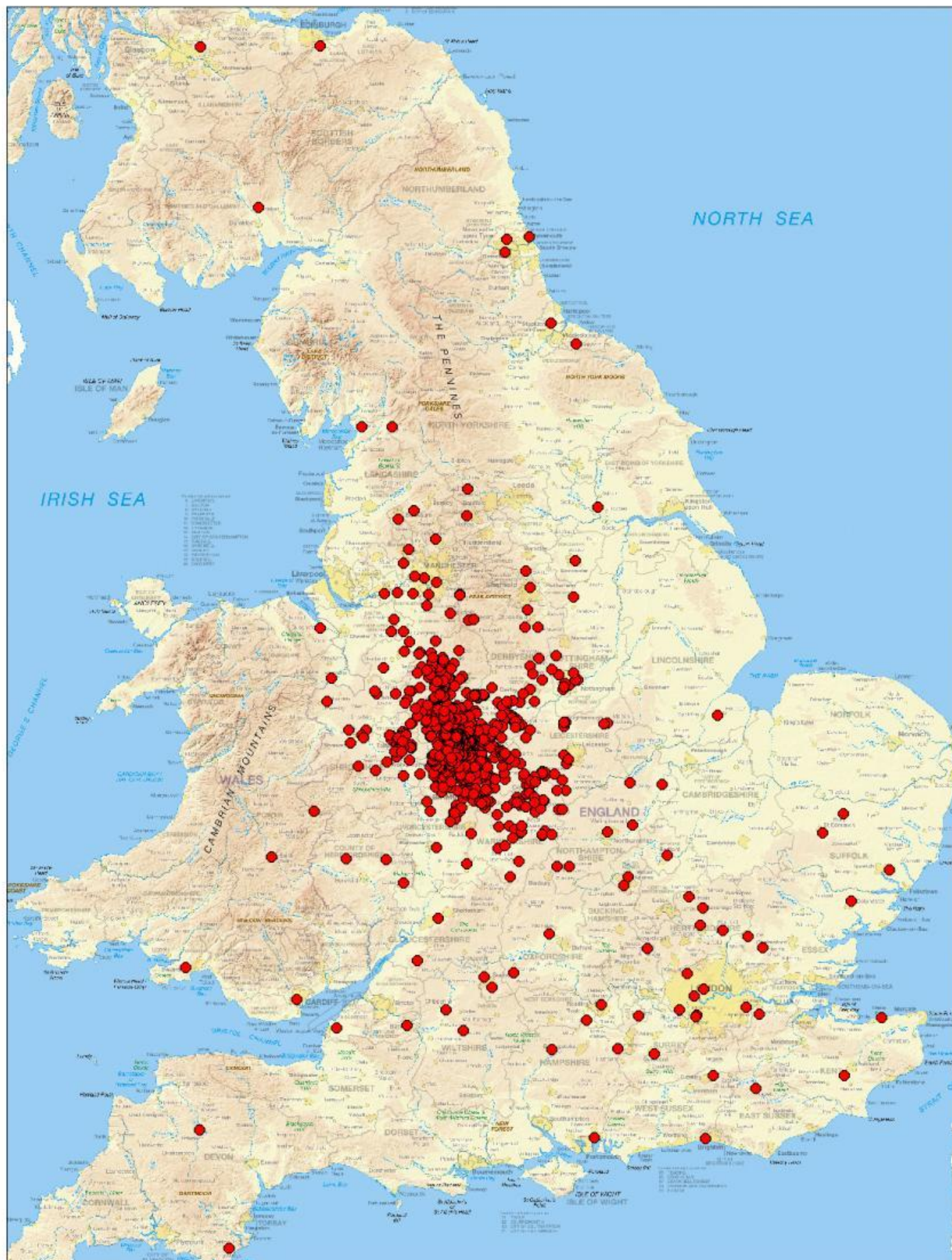
 SAC



Map 5: Activities by location
 (% interviewees stating each activity)

Contains Ordnance Survey Data.
 ©Crown copyright and database right 2011.

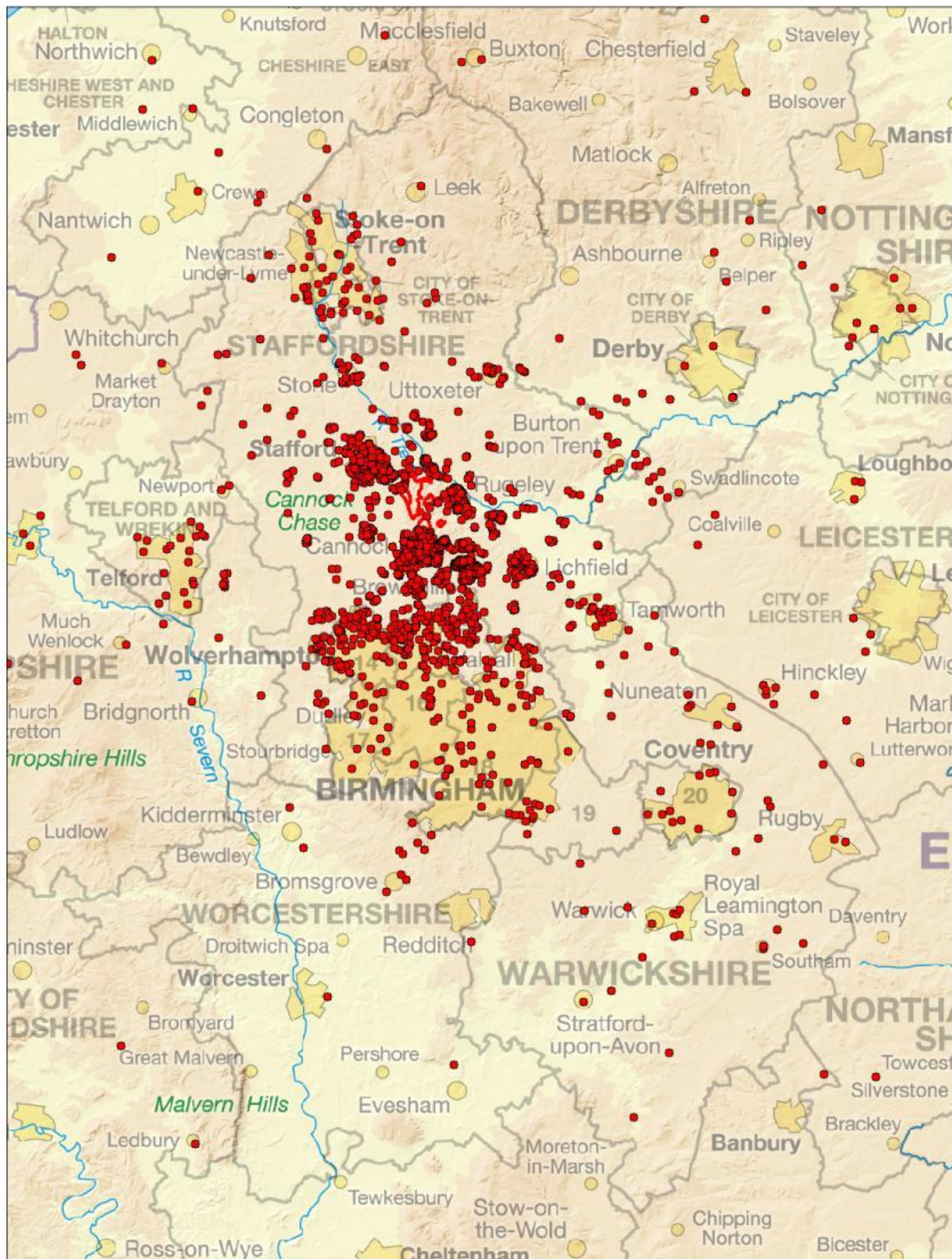




Map 6: Home postcodes of interviewees: all data

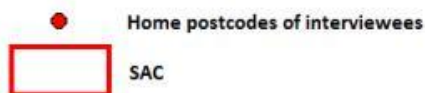
Contains Ordnance Survey Data.
©Crown copyright and database right 2011.

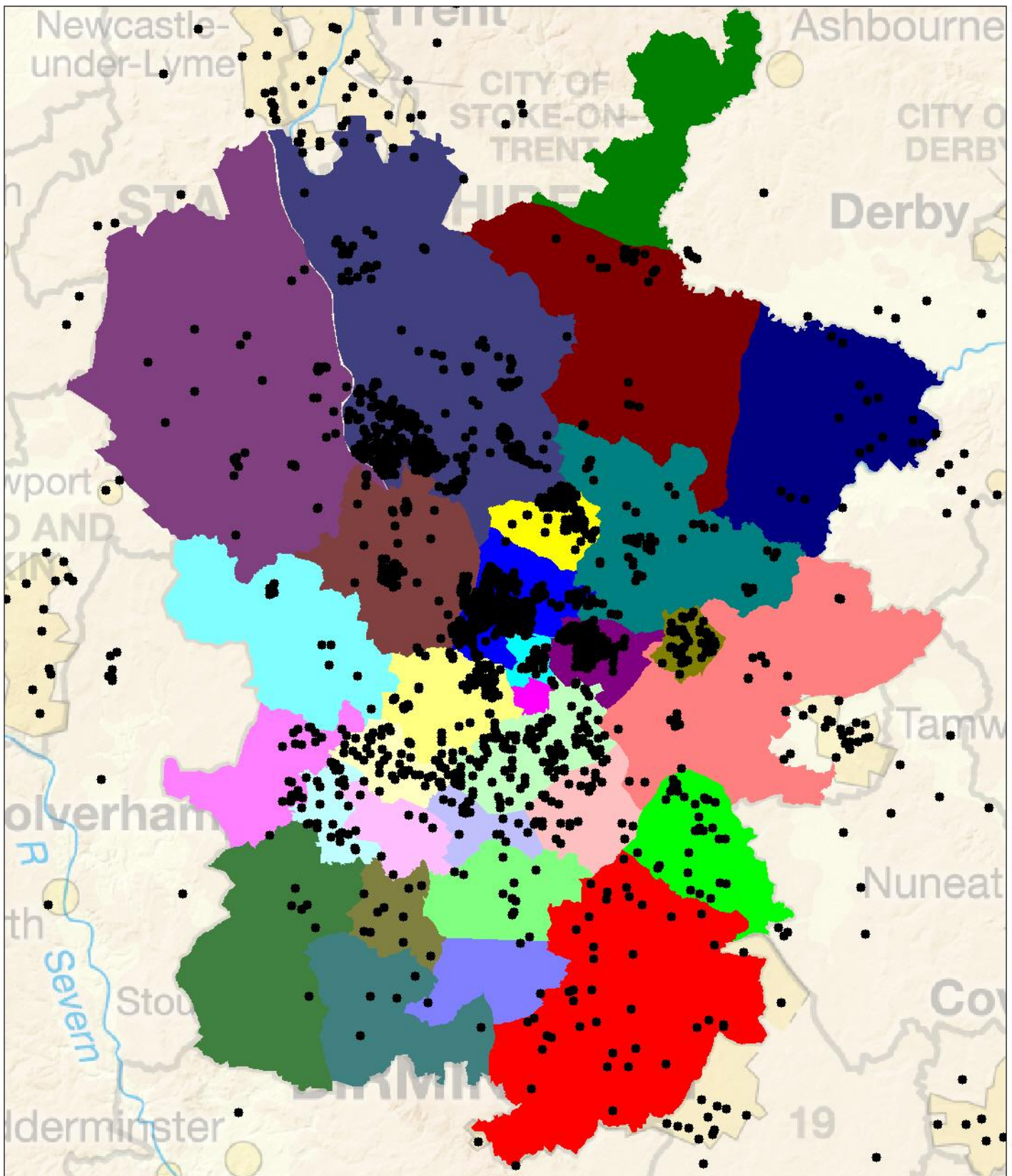
● Home postcodes of interviewees



**Map 7: Home postcodes:
subset from Map 6**

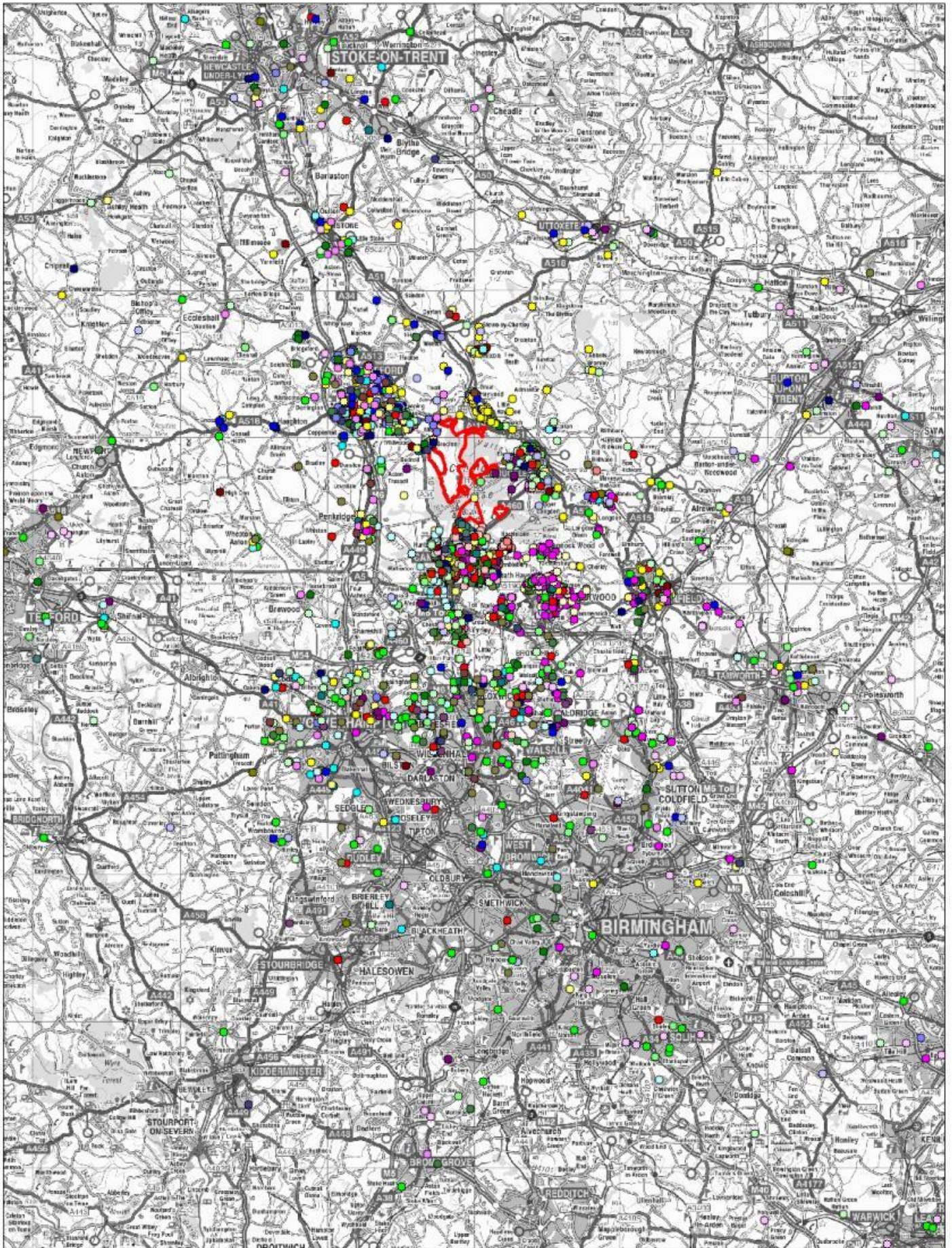
Contains Ordnance Survey Data.
©Crown copyright and database right 2011.





Map 8: Home postcodes of interviewees (all valid postcodes) in relation to local authority sub-areas

Contains Ordnance Survey Data.
©Crown copyright and database right 2011.

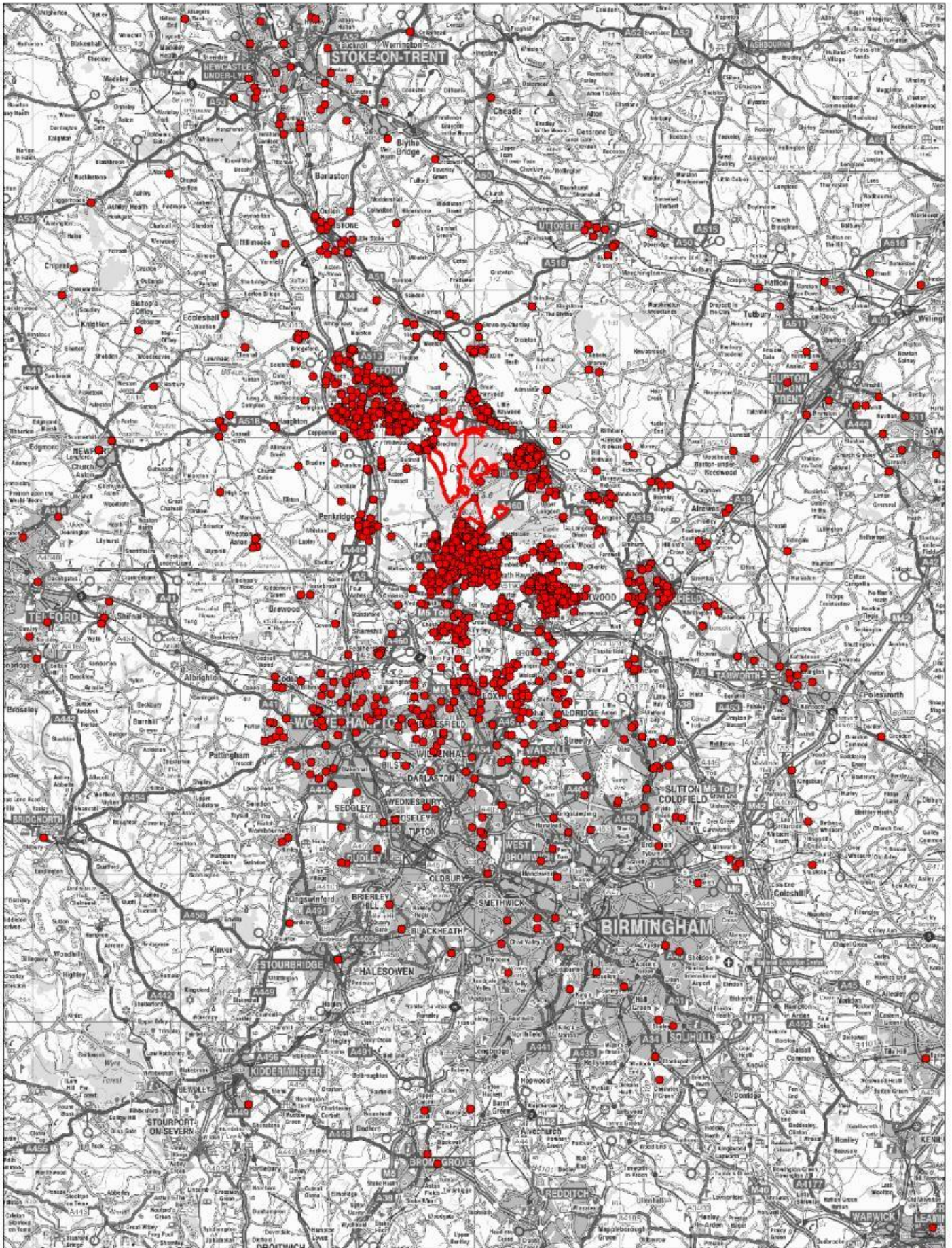


Map 9: Home postcodes by survey point

Contains Ordnance Survey Data.

©Crown copyright and database right 2011.



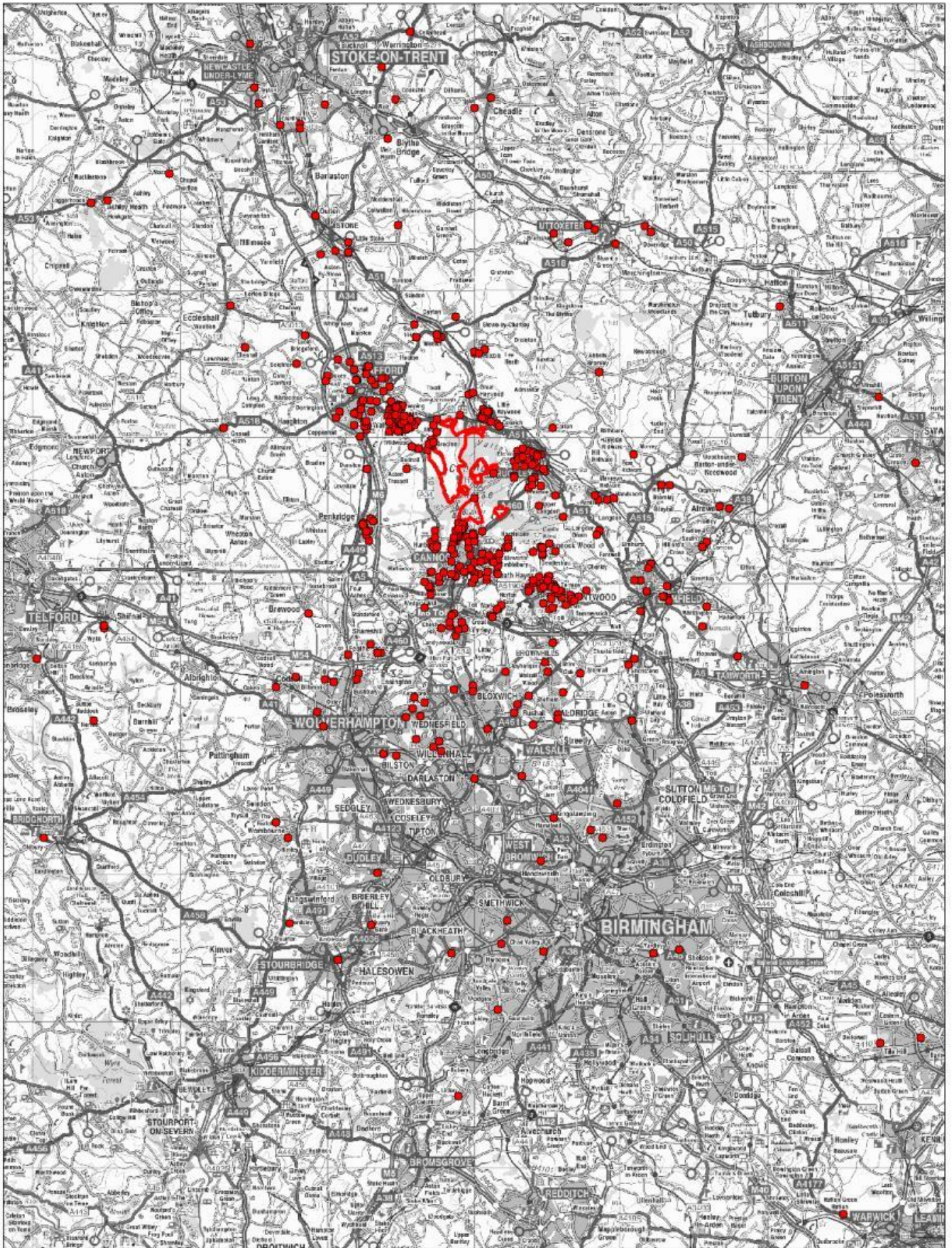


Map 10: Home postcodes of walkers

Contains Ordnance Survey Data.
©Crown copyright and database right 2011.

● Walkers (1946)

□ SAC

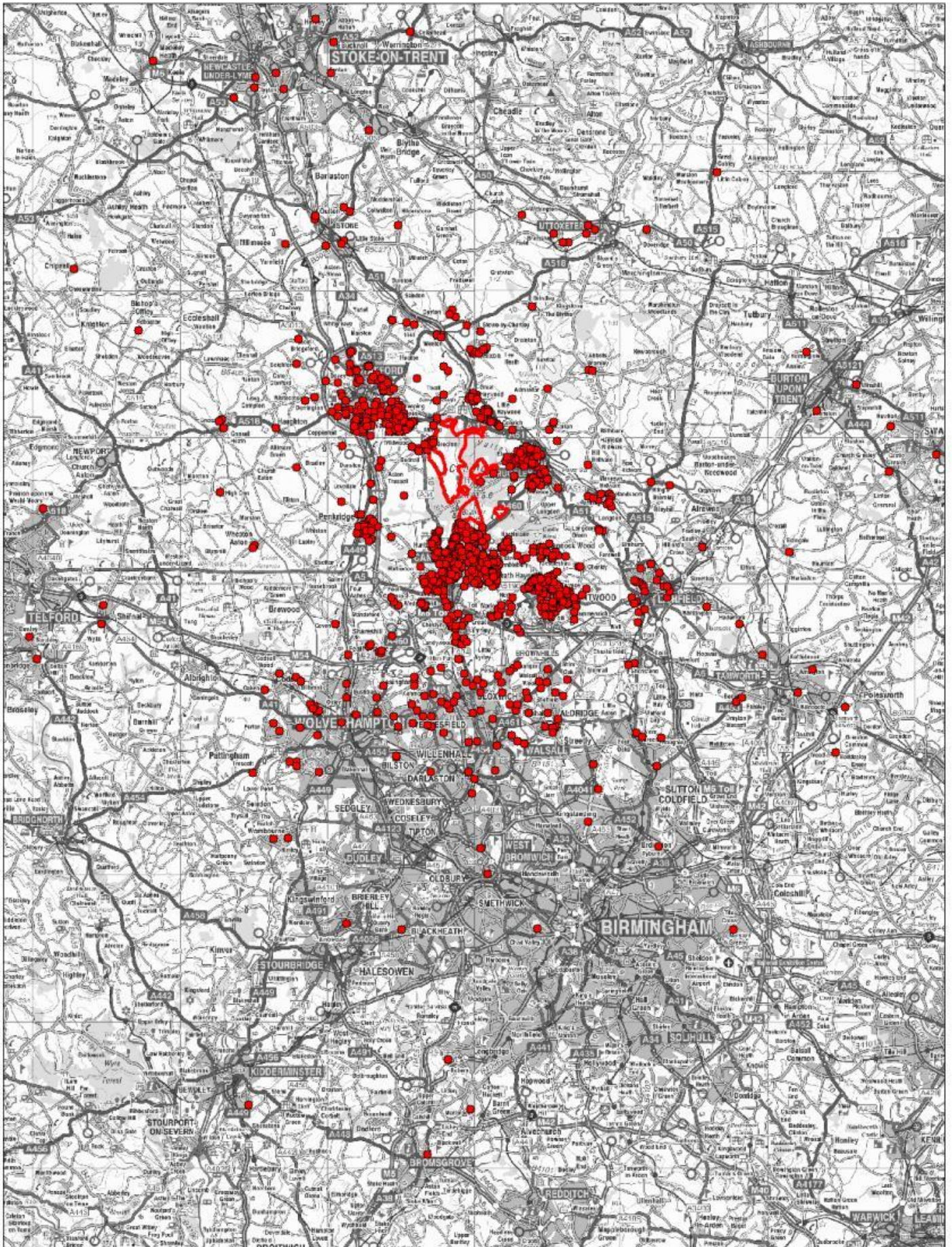


Map 11: Home postcodes of cyclists

Contains Ordnance Survey Data.
©Crown copyright and database right 2011.

● Cyclists (547)

□ SAC

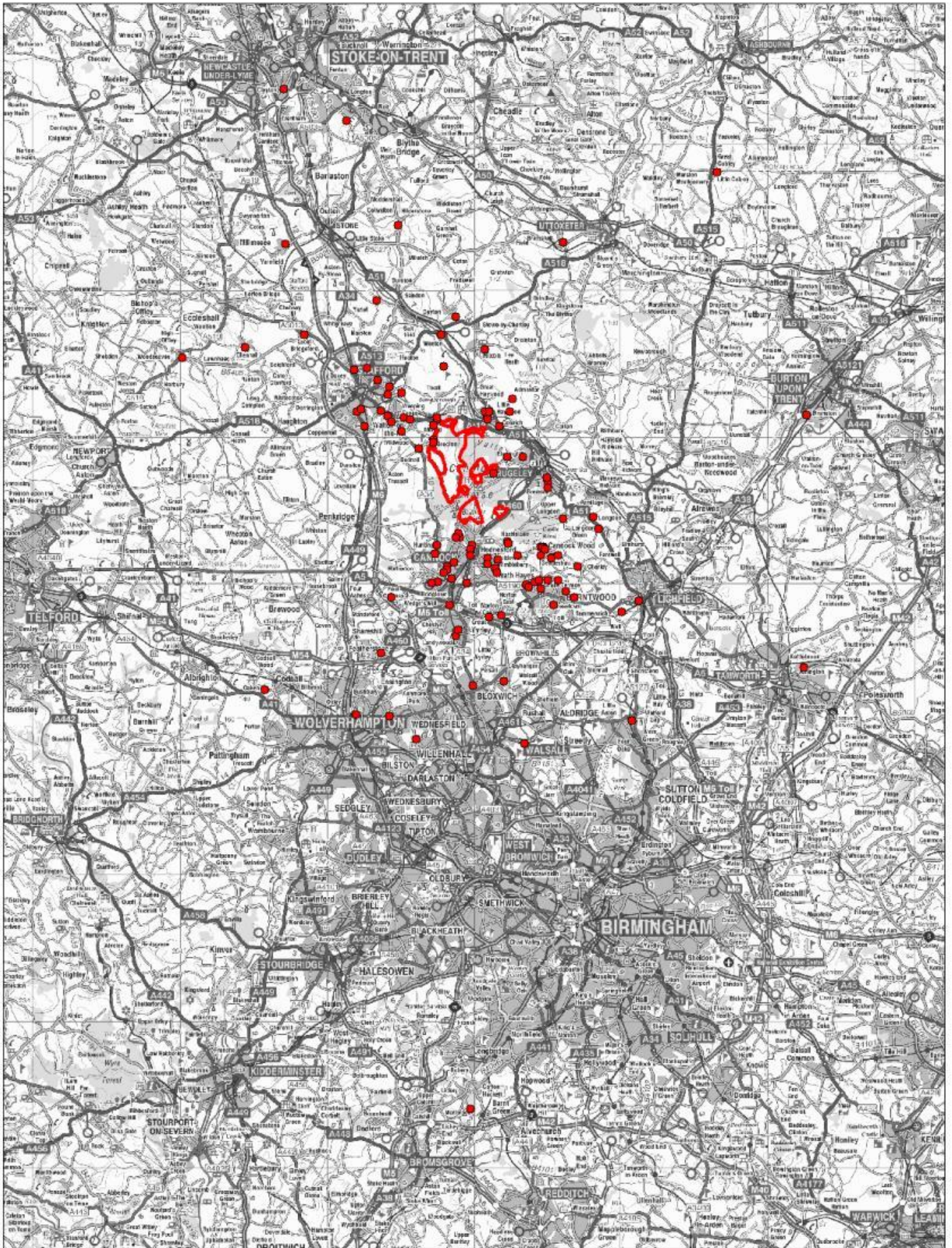


Map 12: Home postcodes of dog walkers

Contains Ordnance Survey Data.
©Crown copyright and database right 2011.

● Dog Walkers (1573)

□ SAC

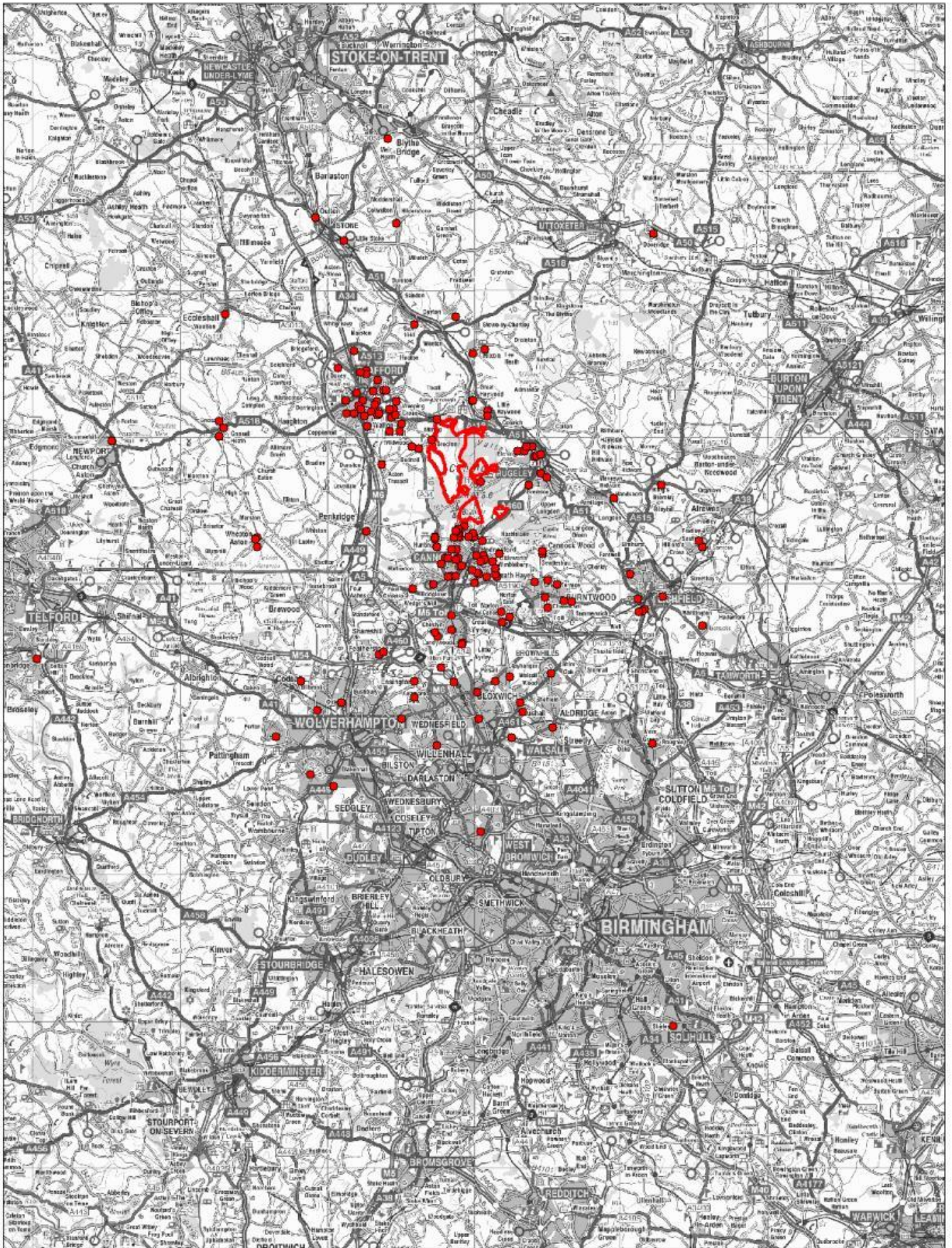


Map 13: Home postcodes of horse riders

Contains Ordnance Survey Data.
©Crown copyright and database right 2011.

● Horse Riders (128)

□ SAC

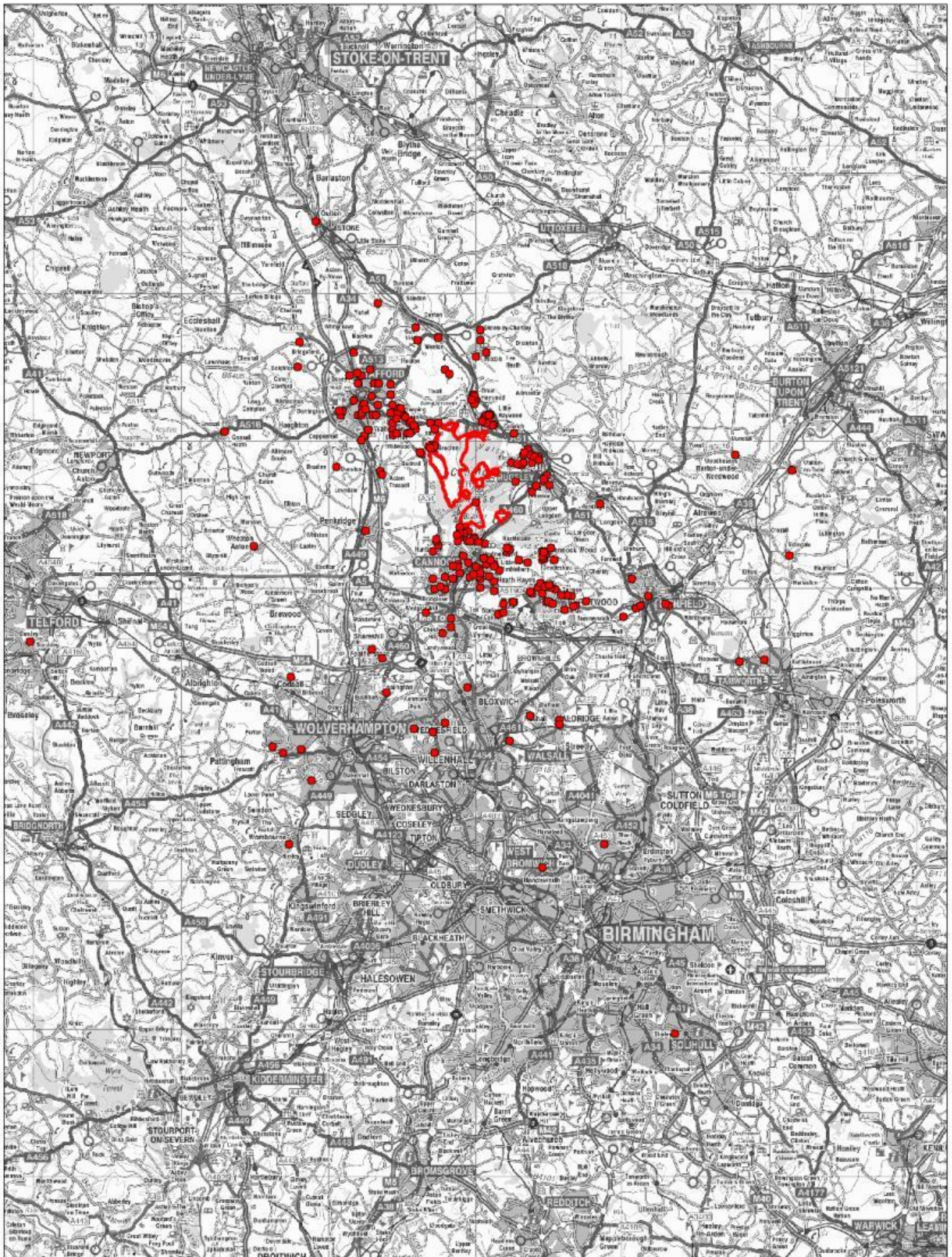


Map 14: Home postcodes of people playing games

Contains Ordnance Survey Data.
©Crown copyright and database right 2011.

● People Playing Games (185)

□ SAC

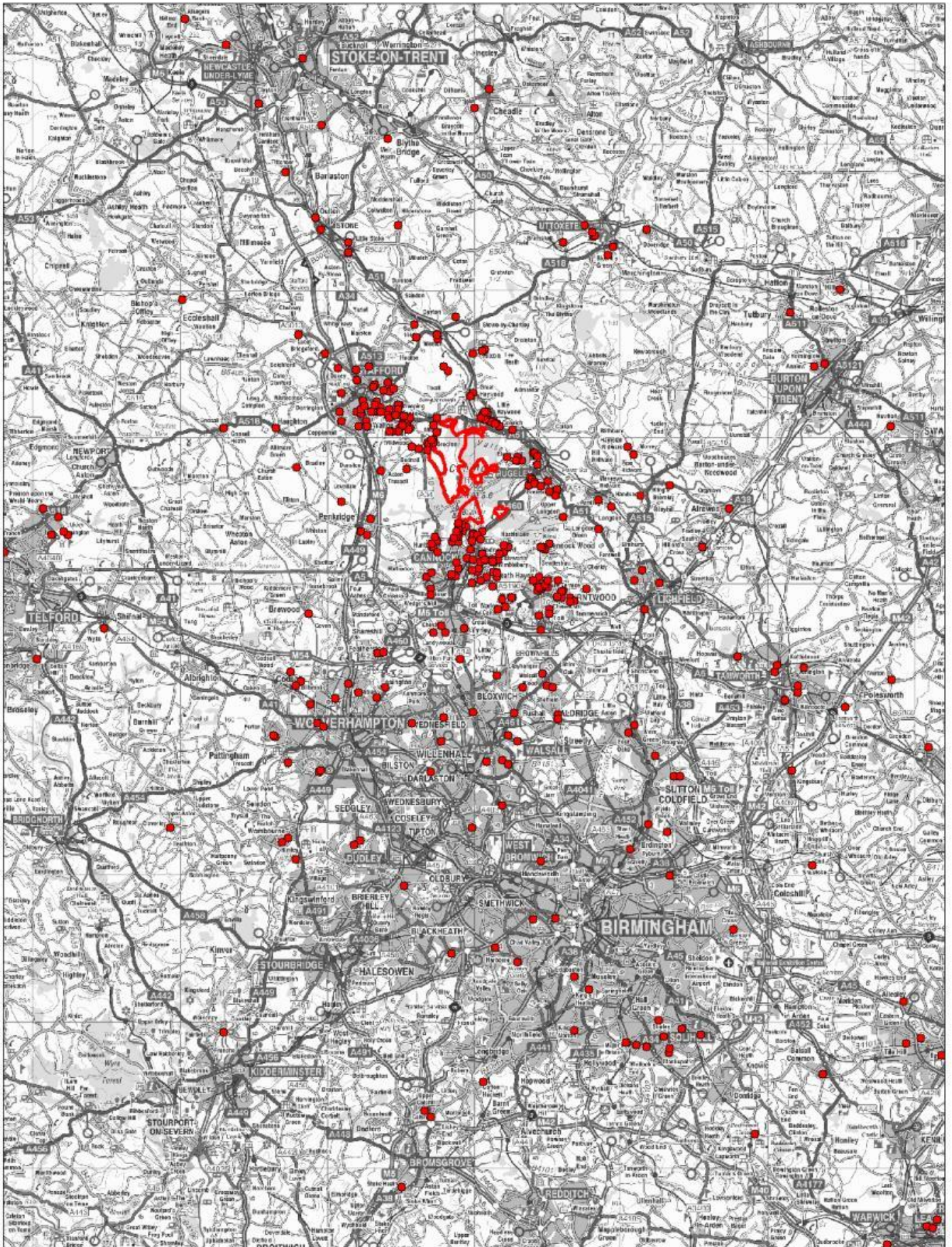


Map 15: Home postcodes of people who came running

Contains Ordnance Survey Data.
 ©Crown copyright and database right 2011.

● Runners (283)

□ SAC

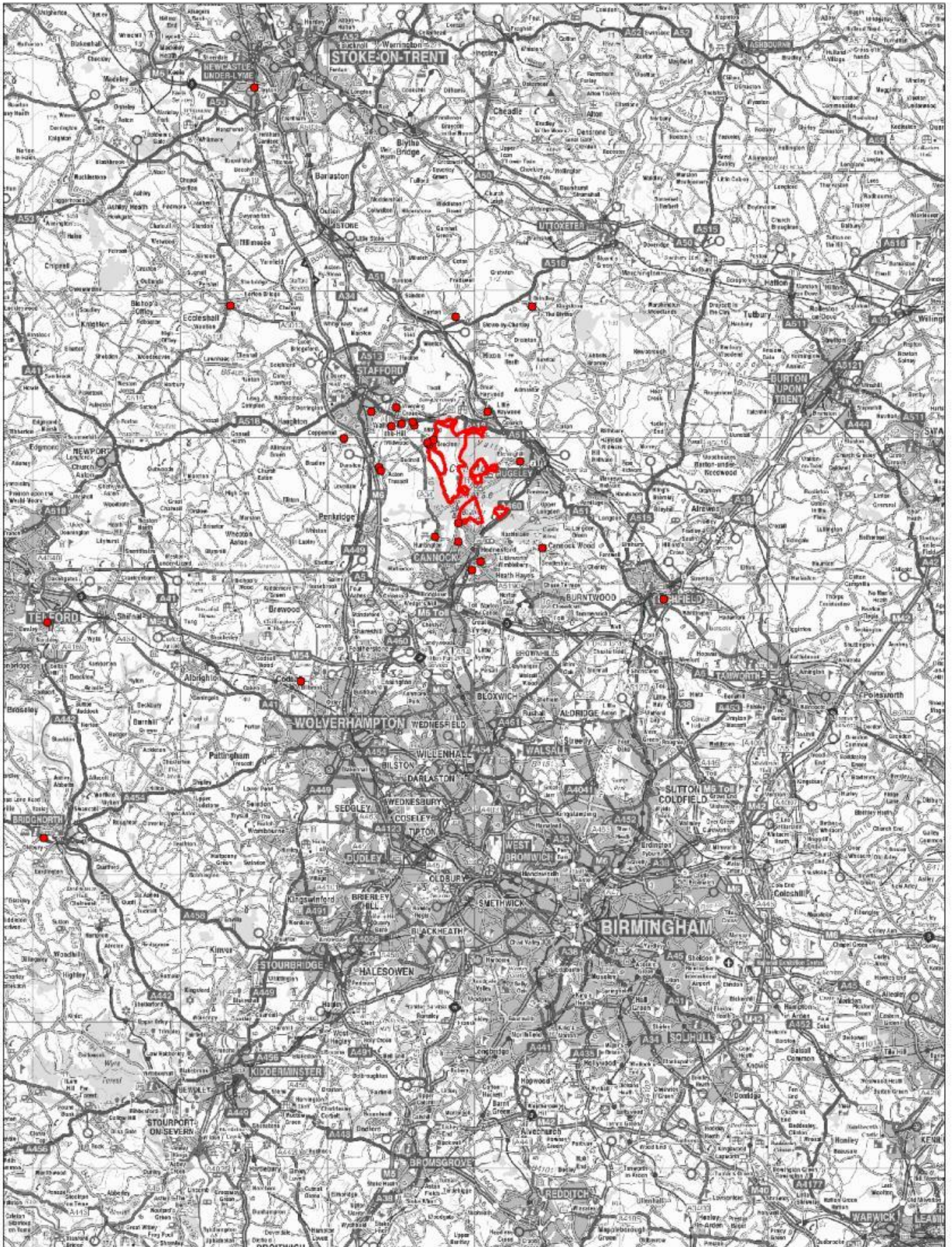


Map 16: Home postcodes of mountain bikers

Contains Ordnance Survey Data.
©Crown copyright and database right 2011.

● Mountain Bikers (517)

□ SAC

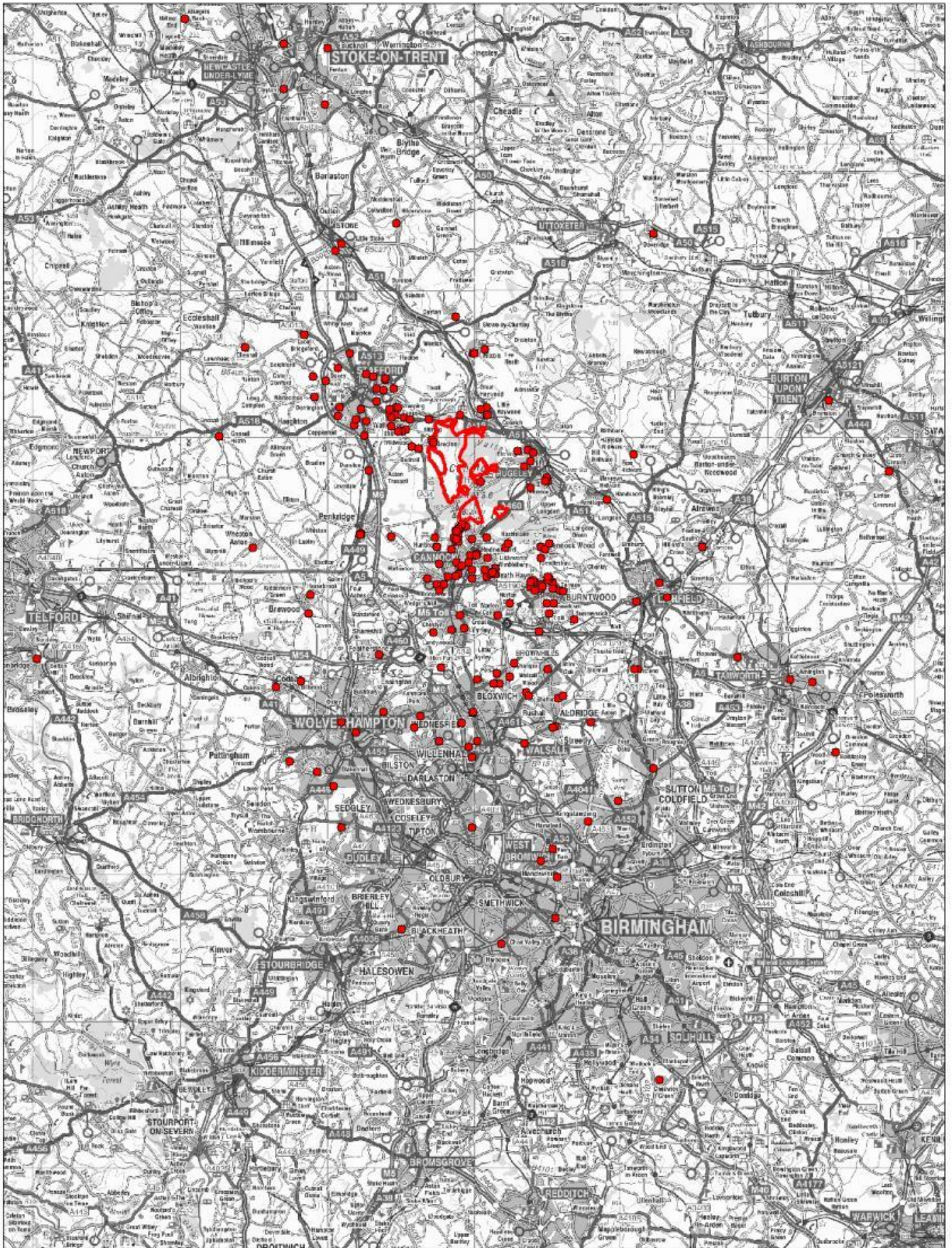


**Map 17: Home postcodes
of people who come orienteering**

Contains Ordnance Survey Data.
©Crown copyright and database right 2011.

● Orienteer (32)

□ SAC

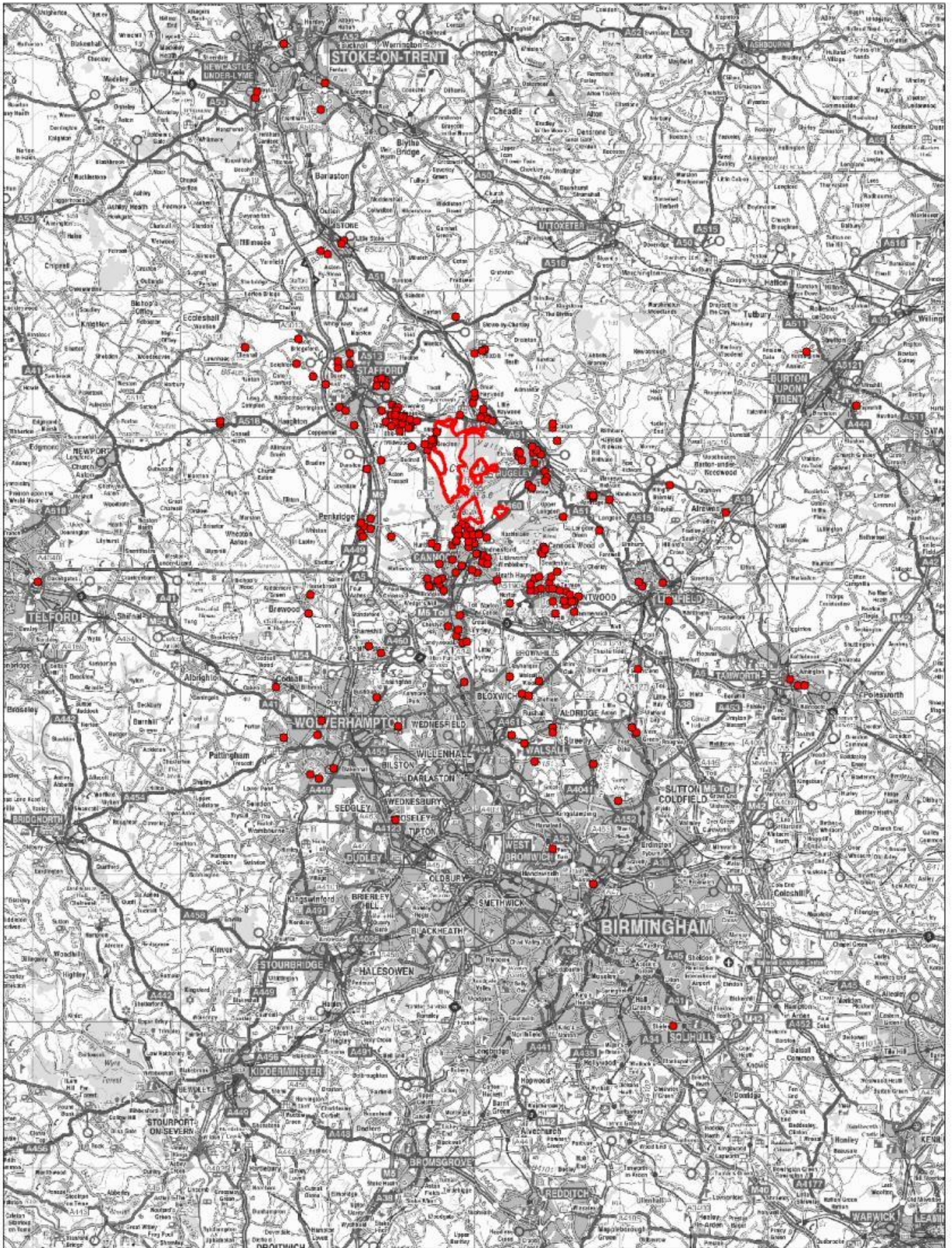


**Map 18: Home postcodes
of people who visit to eat out**

Contains Ordnance Survey Data.
©Crown copyright and database right 2011.

● People who visit to eat out (240)

□ SAC

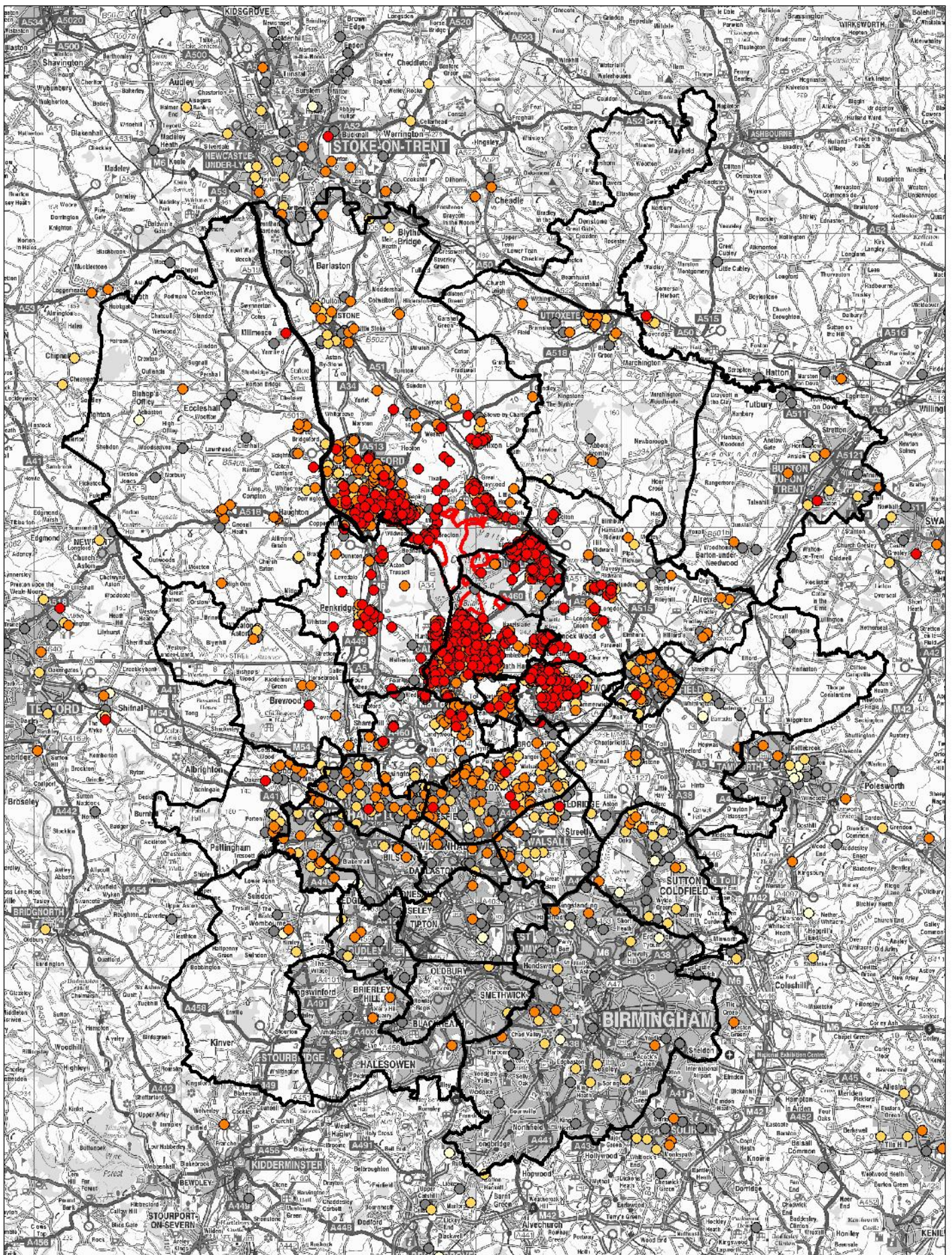


Map 19: Home postcodes of people who birdwatch

Contains Ordnance Survey Data.
©Crown copyright and database right 2011.

● Birdwatchers (260)

□ SAC



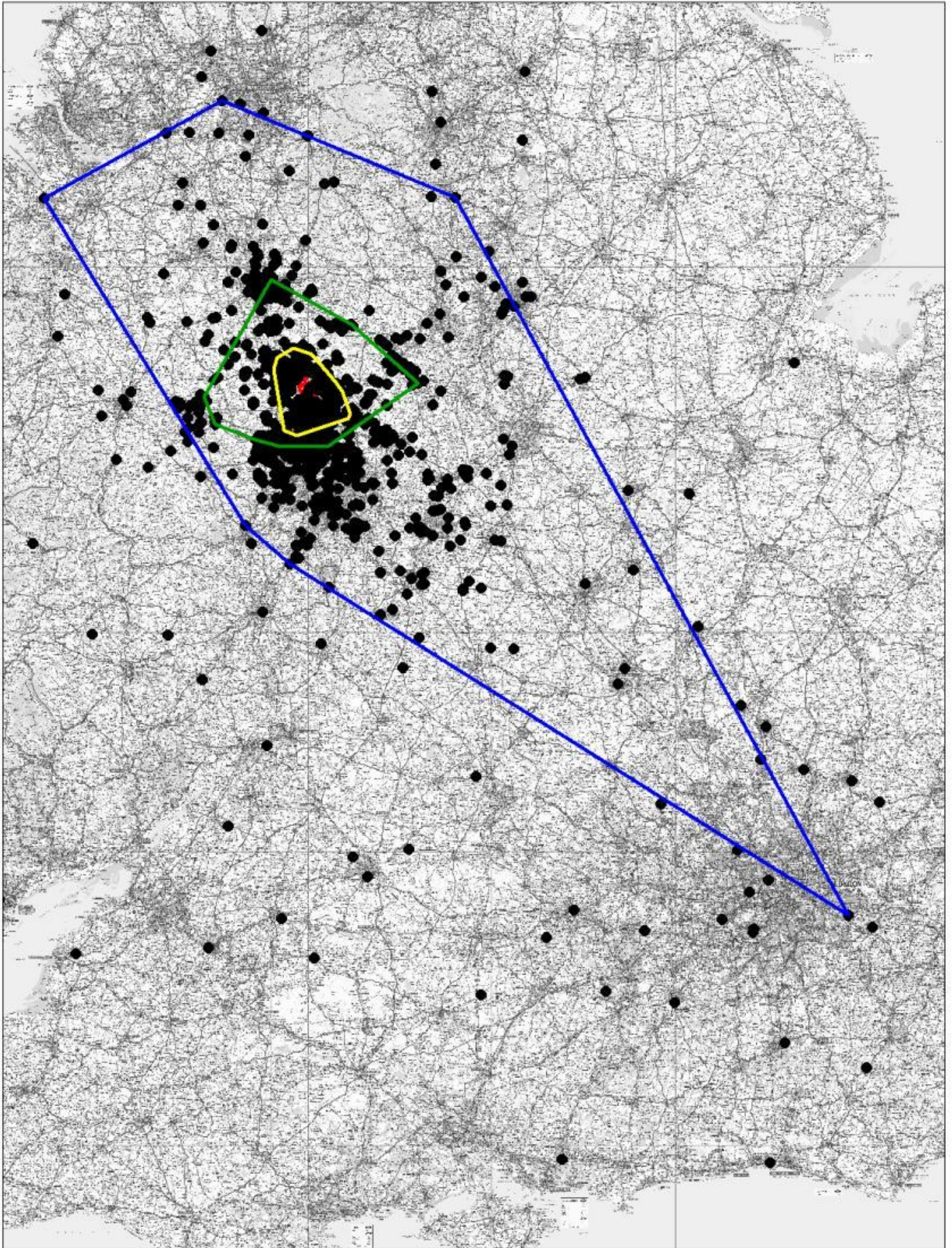
Map 20: Home postcodes by frequency of visit

Contains Ordnance Survey Data.
©Crown copyright and database right 2011.

- Every day
- Every week
- Once a month
- Once a year
- Other

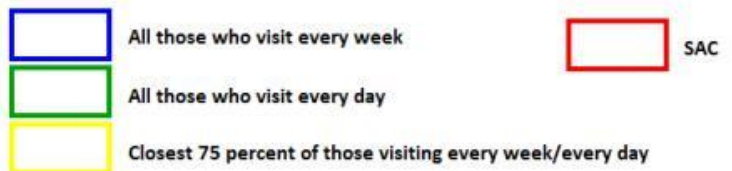


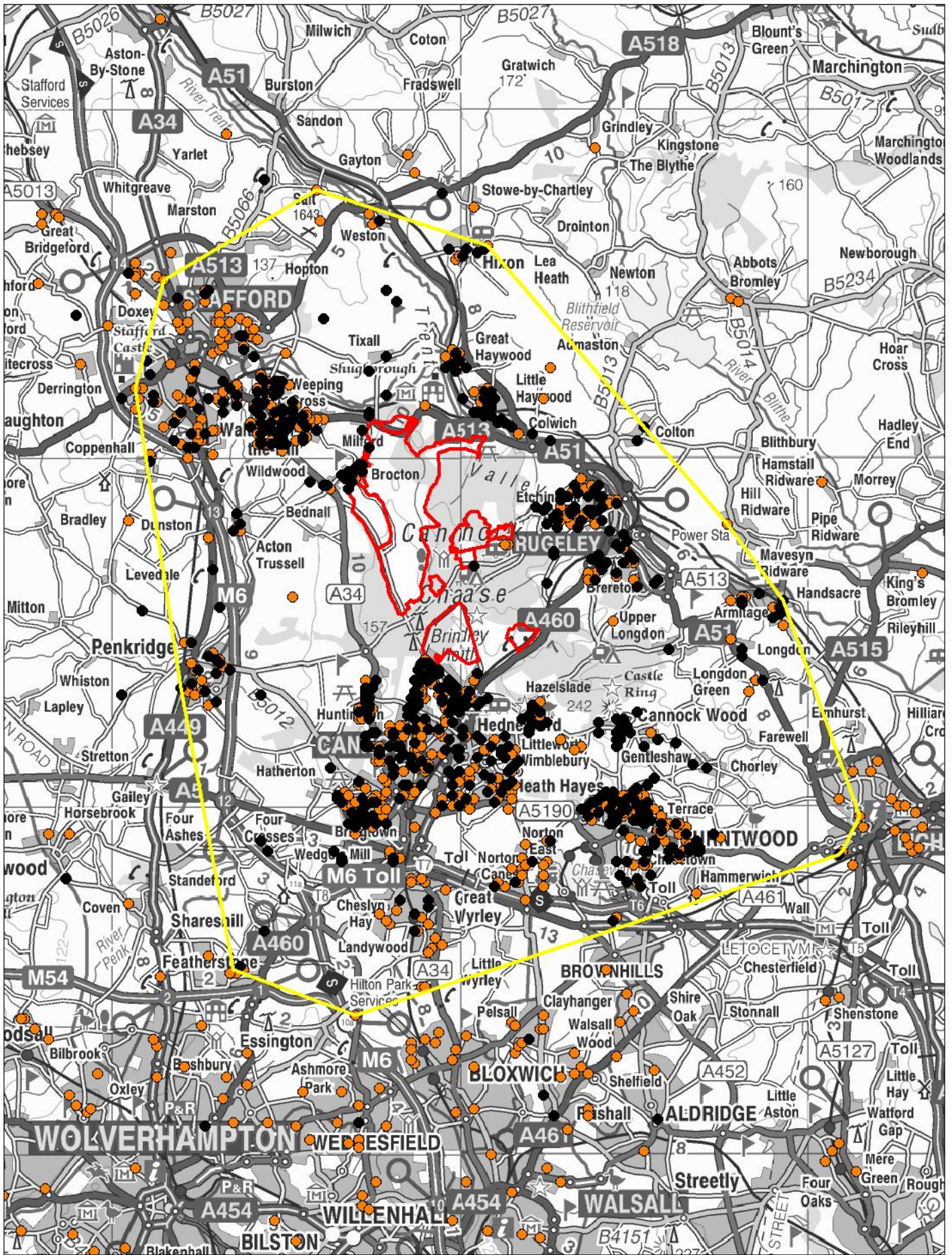
SAC



Map 21: Convex hulls based on frequency of visit

Contains Ordnance Survey Data.
©Crown copyright and database right 2011.

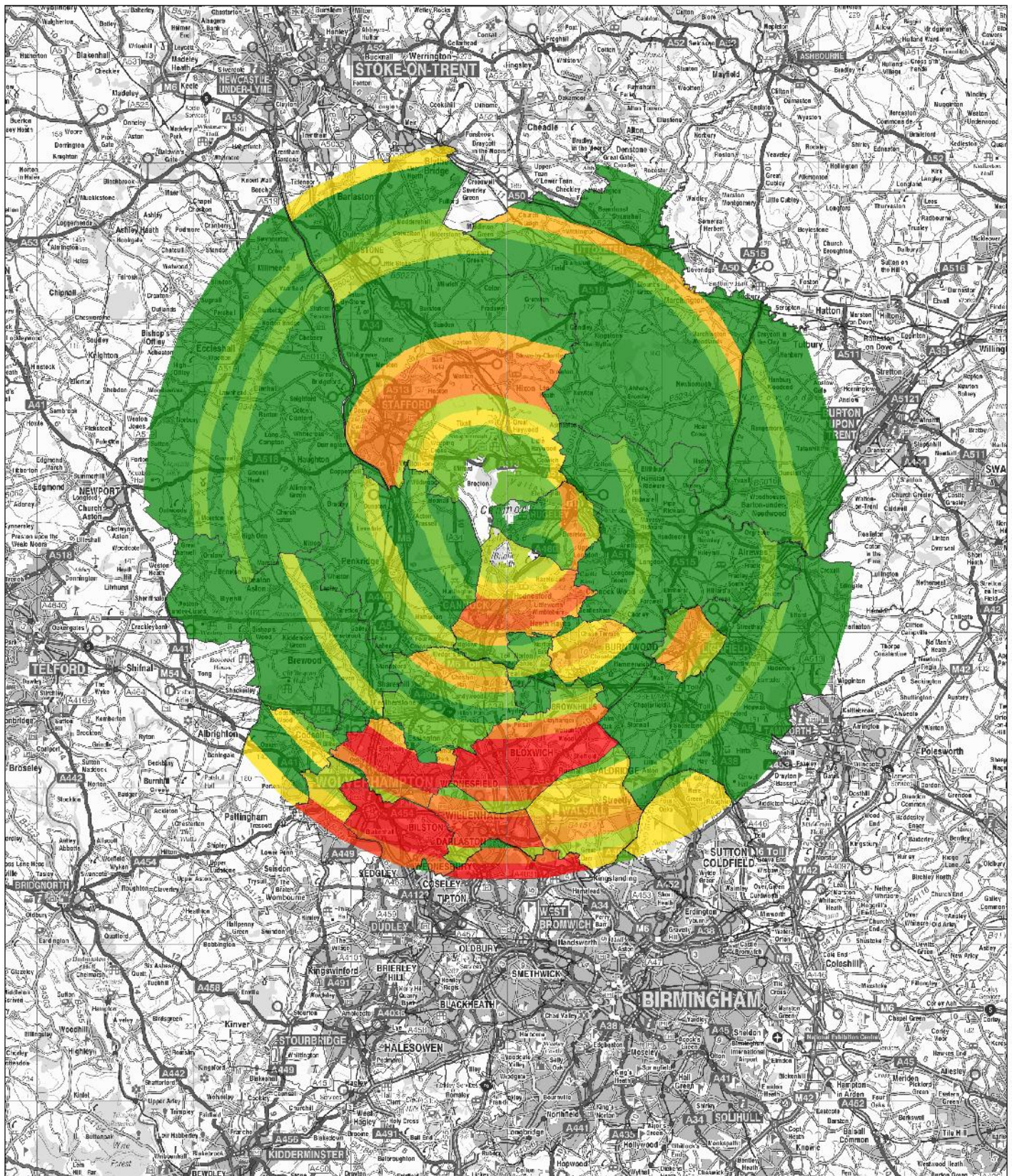




Map 22: Convex hulls based on frequency of visit

Contains Ordnance Survey Data.
©Crown copyright and database right 2011.

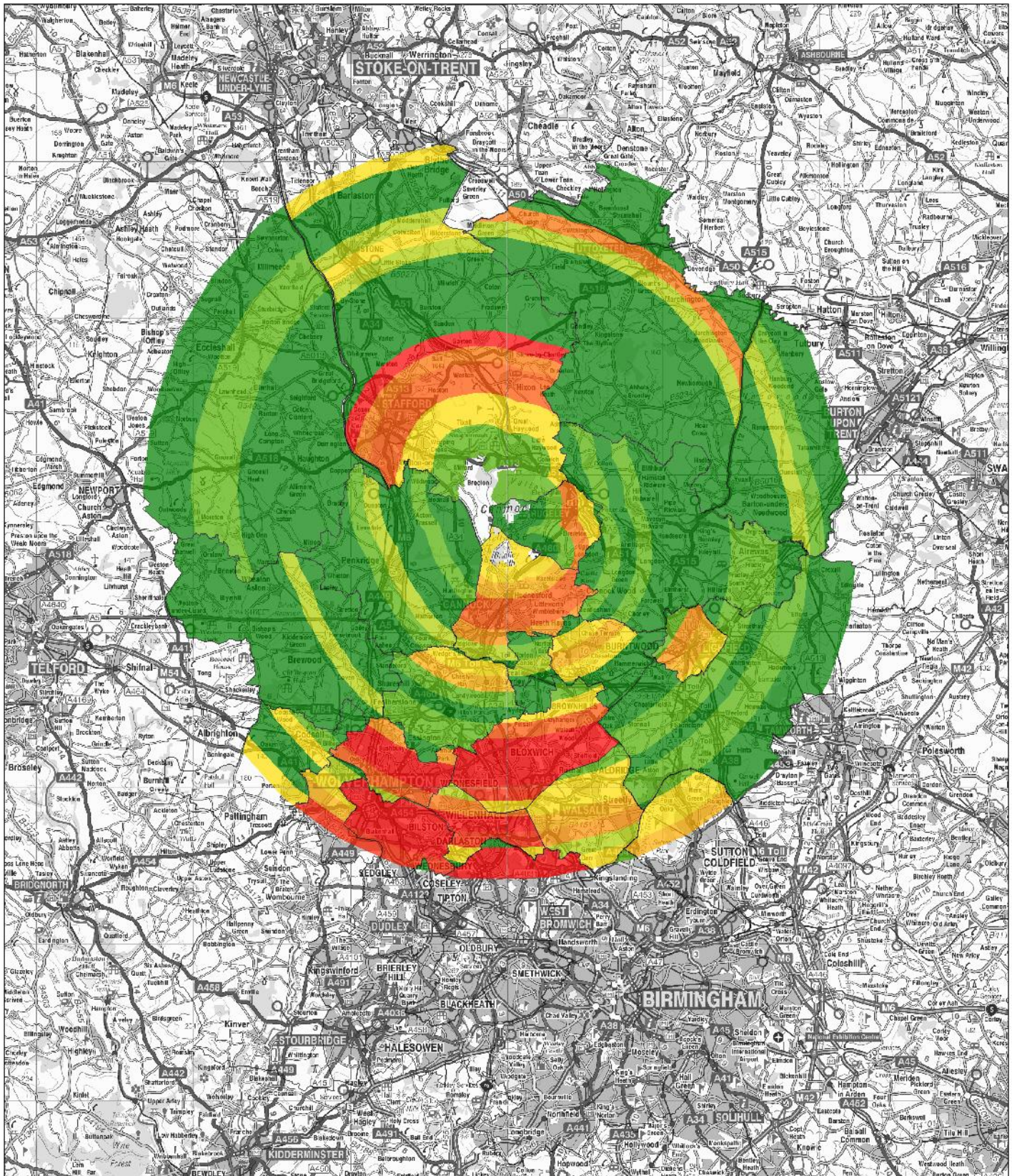
- Postcodes of those visiting every day
- Postcodes of those visiting every week
- ▭ Convex hull - closest 75 percent of those visiting daily or weekly
- ▭ SAC



9,000 to 13,000 (9)	5,000 to 6,000 (3)	1,000 to 2,000 (25)
8,000 to 9,000 (3)	4,000 to 5,000 (8)	0 to 1,000 (145)
7,000 to 8,000 (4)	3,000 to 4,000 (14)	
6,000 to 7,000 (7)	2,000 to 3,000 (17)	

Map 23: Current numbers of housing by sub area and distance band. 1km bands. Colours extend to 20km from SAC boundary.

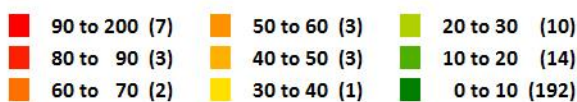
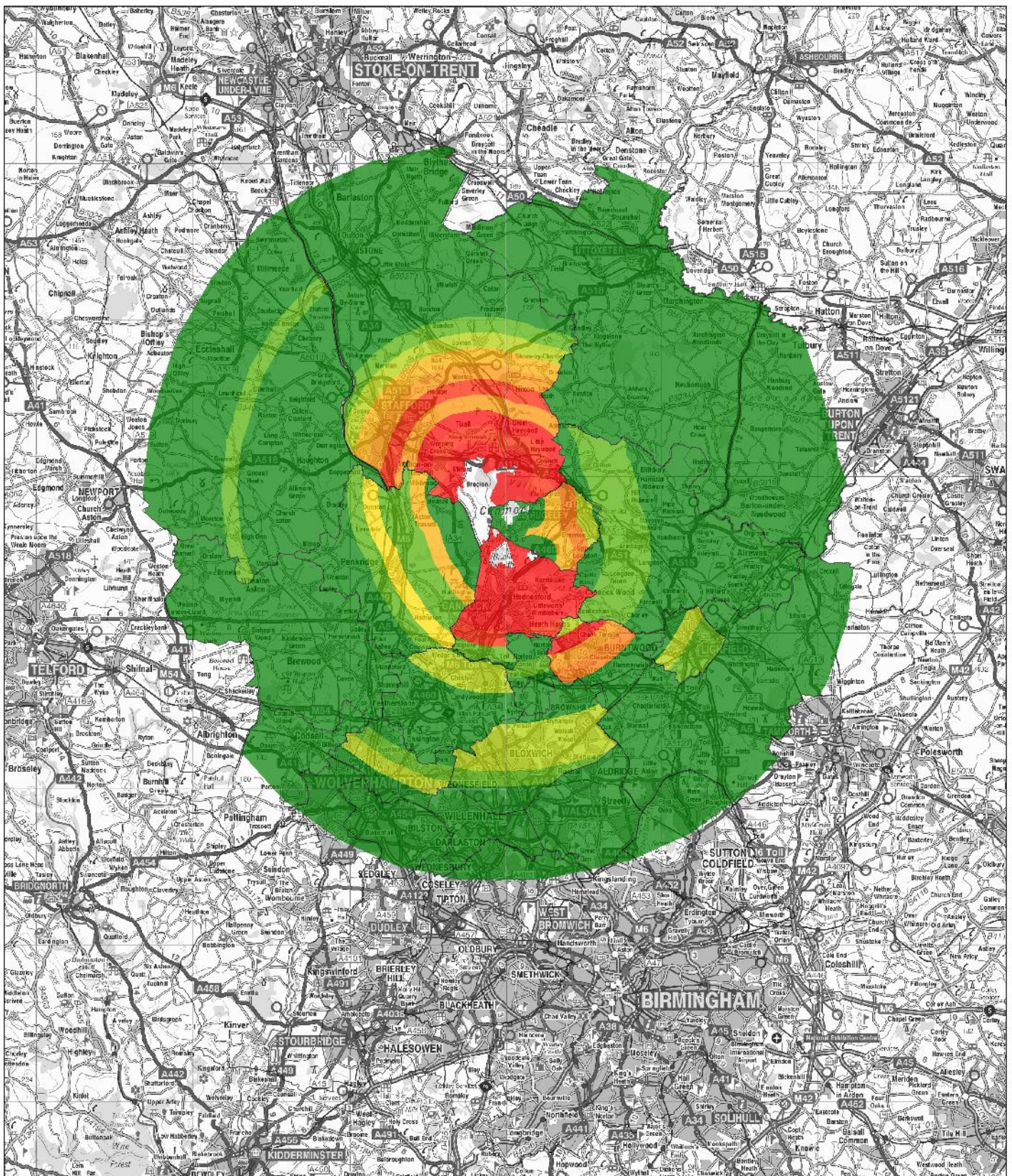
Contains Ordnance Survey Data.
©Crown copyright and database right 2011.



9,000 to 18,000 (12)	5,000 to 6,000 (4)	1,000 to 2,000 (28)
8,000 to 9,000 (4)	4,000 to 5,000 (7)	0 to 1,000 (137)
7,000 to 8,000 (6)	3,000 to 4,000 (21)	
6,000 to 7,000 (4)	2,000 to 3,000 (12)	

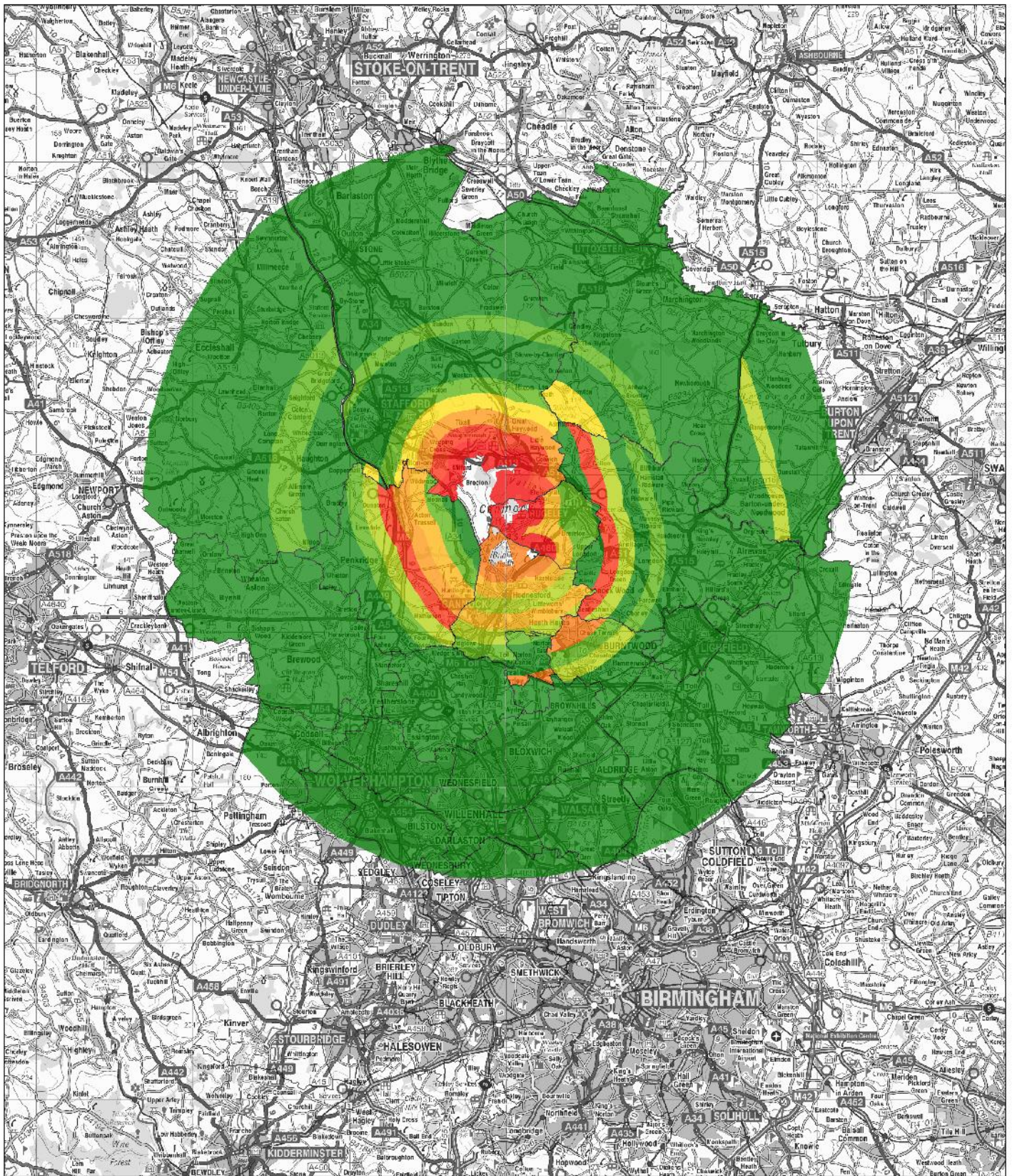
Map 24: New housing (current plus new) by subarea and distance band. 1km bands. Colours extend to 20km from SAC boundary.

Contains Ordnance Survey Data.
©Crown copyright and database right 2011.



**Map 25: Number of interviewee postcodes (excluding Mountain Bikers)
Per 1km band from SAC and per subarea. Colours extend to 20km from SAC boundary.**

Contains Ordnance Survey Data.
©Crown copyright and database right 2011.

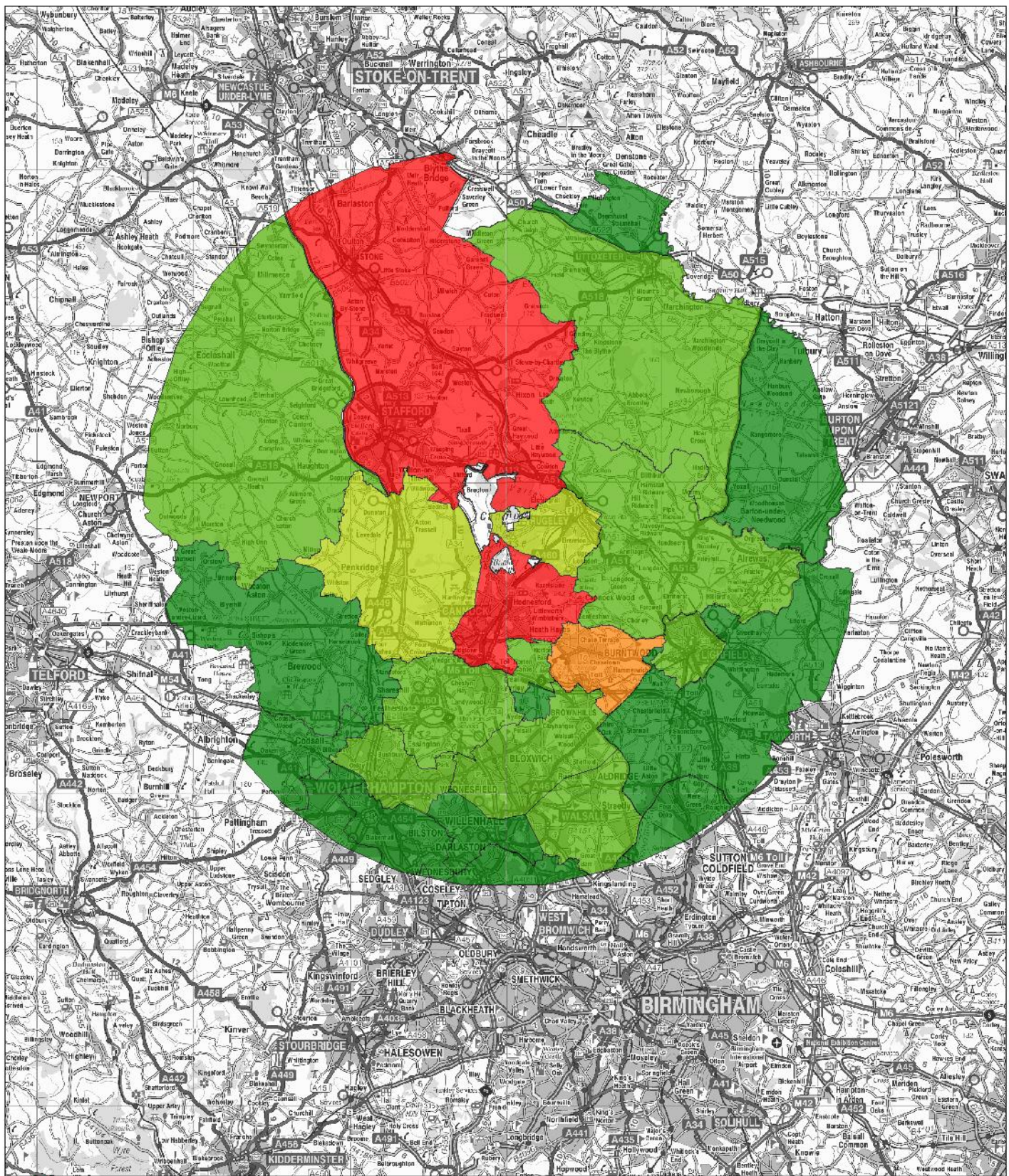


■ 0.05 to 0.15 (2)	■ 0.03 to 0.035 (2)	■ 0.015 to 0.02 (6)
■ 0.045 to 0.05 (3)	■ 0.025 to 0.03 (4)	■ 0.01 to 0.015 (13)
■ 0.035 to 0.04 (4)	■ 0.02 to 0.025 (4)	■ 0 to 0.01 (197)

Map 26: Ratio of interview postcodes to number of houses.
Colours extend to 20km from SAC boundary.

Contains Ordnance Survey Data.

©Crown copyright and database right 2011.



Map 27: Percentage change by subarea, within 20km radius.

